

AllStyle

ASLT, ASLB, ASFM, ASKM
ALL-IN-ONE PLENUM COIL

THE PATENTED, MOLD-RESISTANT

SILVER-LINER



Safety drain pan shown must be ordered separately.

EXCLUSIVE PATENTED DESIGN COMBINES COIL AND PLENUM IN ONE EASY TO INSTALL UNIT. SAVES TIME AND MONEY!

FEATURES

- CLEANABLE MOLD-RESISTANT INTERIOR SURFACE**
- FIBERGLASS REMOVED FROM THE AIR STREAM**
- SUPER-TOUGH POLY-CARBONATE DRAIN PAN**
- TOP REFRIGERANT CONNECTIONS AND L & R DRAIN CONNECTIONS**
- SUPERIOR AIR FLOW COMPARED TO OTHER HORIZONTAL COILS**
- FACTORY OR FIELD INSTALLED EXPANSION VALVES**
- PITCHED DRAIN PAN ELEVATES COIL FROM CONDENSATE**
- RIFLED COPPER TUBE • ENHANCED ALUMINUM FINS**
- HEAVY ALUMINUM END PLATES vs. GALVANIZED STEEL**
- PRESSURE TESTED TO 450# • R-410A COMPATIBLE**

AllStyle Coil Co., L.P. 7037 Brittmore, Houston, Texas 77041 • 713 466 6333 • FAX 713 466 6363 • www.allstyle.com

AllStyle

ASLT, ASLB, ASFM, ASKM ALL-IN-ONE PLENUM COIL

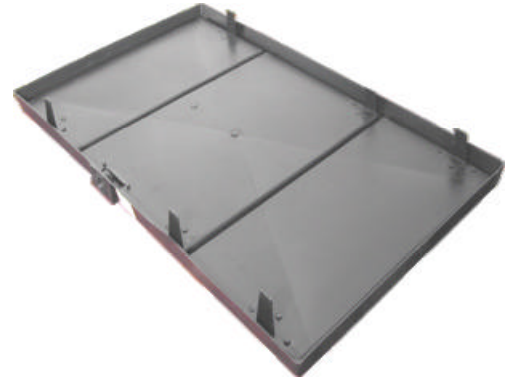
3/4 In. FPT PRIMARY DRAIN CONNECTION
3/4 In. SLIP SECONDARY DRAIN CONNECTION

3/8 In. REFRIGERANT LIQUID LINE
REFRIGERANT SUCTION LINE

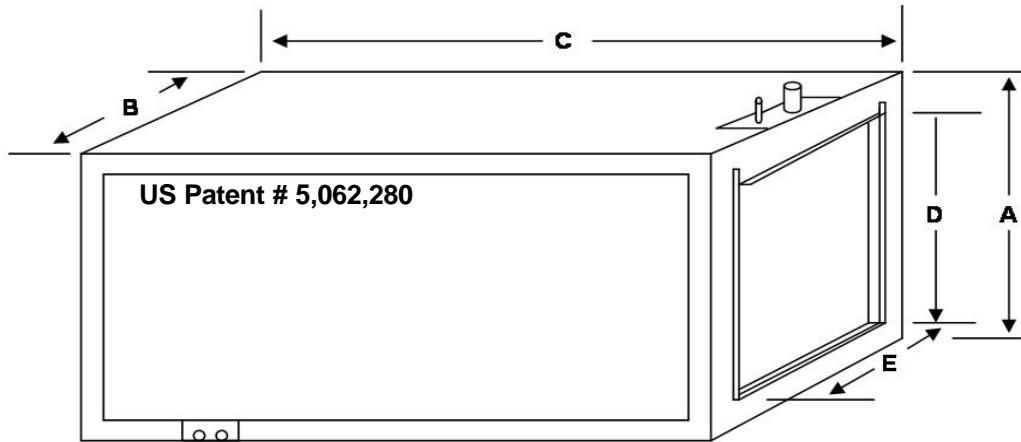
1.5 TO 3.0 TONS = 3/4 In.

3.5 TO 5.0 TONS = 7/8 In.

OPTIONAL GALVANIZED STEEL CABINET



ACCESSORY SAFETY DRAIN PAN



CABINET SPECIFICATIONS (Inches)

MODEL	HEIGHT A	WIDTH B	LENGTH C	OPENING D	OPENING E
ASLT	18.25	20.25	24	17 TO 18	16 TO 20.25
ASLB	18.25	20.25	34.375	17 TO 18	16 TO 20.25
ASLL	18.25	20.25	40.375	17 TO 18	16 TO 20.25
ASFM	22.25	20.25	34.375	20 TO 21	16 TO 20.25
ASFL	22.25	20.25	40.375	20 TO 21	16 TO 20.25
ASKM	26.25	20.25	34.375	22 TO 23	16 TO 20.25
ASKL	26.25	20.25	40.375	22 TO 23	16 TO 20.25

Specifications may change without notice

AllStyle Coil Co., L.P.

7037 Brittmore, Houston, Texas 77041 • 713 466 6333 • FAX 713 466 6363 • www.allstyle.com



ASLT, ASLB, ASFM, ASKM SAFETY DRAIN PANS

STANDARD FEATURES

EXACT FIT FOR AllStyle PLENUM COILS
STURDY POLYPROPYLENE DESIGN
SEAMLESS ONE PIECE
3/4" FPT DRAIN CONNECTION
MOUNTING BRACKETS ARE INTEGRAL TO THE DRAIN PAN
ETL LISTED ACCESSORY FOR AllStyle COILS

ORDERING INSTRUCTIONS

SPECIFY COMPLETE MODEL NUMBER OR PART NUMBER (ie. SP-46003)
or
ADD "S" TO THE END OF THE PLENUM COIL MODEL NUMBER



PRODUCT SPECIFICATIONS

Part #	Model #	Dimensions	Fits Plenum Coil Model	Drain Connection
46003	DHSP	26"x22"x1.5"	ASDH, LBDH, FMDH, KMDH, ASLT	3/4" FPT
46002	FMSP	37"x22"x1.5"	ASFM, ASLB, ASKM, ASLM	3/4" FPT
46006	FLSP	43"x22"x1.5"	ASLL, ASFL, ASKL	3/4" FPT

Specifications may change without notice.