



”AAA” SILVER-LINER

ALL - ALUMINUM

MOLD RESISTANT PLENUM-COIL

THE PLENUM COIL COMBINES AN ADJUSTABLE INLET ADAPTER, COOLING COIL, AND SUPPLY PLENUM INTO ONE EASY TO INSTALL UNIT. SAVES TIME, MONEY, & MATERIALS, MAKING YOU MORE COMPETITIVE!!!

Safety drain pan has International Mechanical Code Council approval.

AllStyle

AllStyle Coil Co., L.P.

7037 Brittmore; Houston, Texas 77041
www.allstyle.com © AllStyle Coil Co., L.P. 2003

FEATURES:

GROOVED ALUMINUM TUBE
ALUMINUM FINS, ALUMINUM END
PLATES

RATED FOR R-22 & R-410A

EASILY REMOVABLE TOP PANEL
WITH LOCKING AIR SEAL & K.O. FOR
U.V. LIGHT

CLEANABLE, MOLD RESISTANT
SILVER-LINER INTERIOR
UV RESISTANT MATERIALS

MOLD RESISTANT POLYMER DRAIN
PAN PITCHED FOR DRAINAGE

EASY INSTALLED SAFETY DRAIN PAN

BALANCED AIR FLOW FROM SIDES
OR END OF PLENUM

ALL MODELS ONLY 20.25” WIDE FOR
EASY ATTIC INSTALLATION

NO FIBERGLASS IN AIRSTREAM

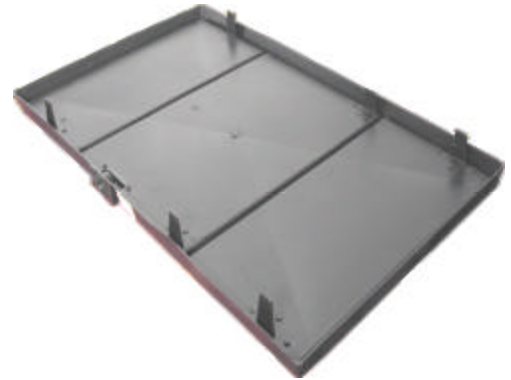


ASLT, ASLB, ASFM, ASKM ALL-IN-ONE PLENUM COIL

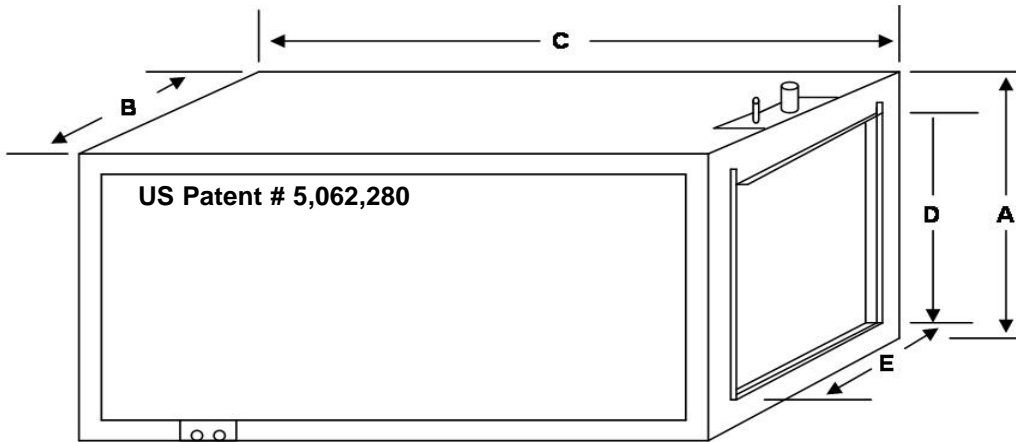
**3/4 In. FPT PRIMARY DRAIN CONNECTION
3/4 In. SLIP SECONDARY DRAIN CONNECTION**

**3/8 In. REFRIGERANT LIQUID LINE
REFRIGERANT SUCTION LINE**
1.5 TO 3.0 TONS = 3/4 In.
3.5 TO 5.0 TONS = 7/8 In.

OPTIONAL GALVANIZED STEEL CABINET



ACCESSORY SAFETY DRAIN PAN



CABINET SPECIFICATIONS (Inches)

MODEL	HEIGHT A	WIDTH B	LENGTH C	OPENING D	OPENING E
ASLT	18.25	20.25	24	13 TO 18	16 TO 20.25
ASLB	18.25	20.25	34.375	13 TO 18	16 TO 20.25
ASLL	18.25	20.25	40.375	13 TO 18	16 TO 20.25
ASFM	22.25	20.25	34.375	17 TO 21	16 TO 20.25
ASFL	22.25	20.25	40.375	17 TO 21	16 TO 20.25
ASKM	26.25	20.25	34.375	21 TO 23	16 TO 20.25
ASKL	26.25	20.25	40.375	21 TO 23	16 TO 20.25

Specifications may change without notice



ASLT, ASLB, ASFM, ASKM SAFETY DRAIN PANS

STANDARD FEATURES

EXACT FIT FOR AllStyle PLENUM COILS
STURDY POLYPROPYLENE DESIGN
SEAMLESS ONE PIECE
3/4" FPT DRAIN CONNECTION
MOUNTING BRACKETS ARE INTEGRAL TO THE DRAIN PAN
ETL LISTED ACCESSORY FOR AllStyle COILS

ORDERING INSTRUCTIONS

SPECIFY COMPLETE MODEL NUMBER OR PART NUMBER (ie. SP-46003)
or
ADD "S" TO THE END OF THE PLENUM COIL MODEL NUMBER



PRODUCT SPECIFICATIONS

Part #	Model #	Dimensions	Fits Plenum Coil Model	Drain Connection
46003	DHSP	26"x22"x1.5"	ASDH, LBDH, FMDH, KMDH, ASLT	3/4" FPT
46002	FMSP	37"x22"x1.5"	ASFM, ASLB, ASKM, ASLM	3/4" FPT
46006	FLSP	43"x22"x1.5"	ASLL, ASFL, ASKL	3/4" FPT

Specifications may change without notice.