

# AllStyle

## SL / BL MULTI-POS AHU A/C OR HP, R22 & R410A “AAA” ALL-ALUMINUM COIL



### STANDARD FEATURES:

**MULTI-POSITION:UPFLOW & HORIZONTAL  
ALUMINUM TUBE, ALUMINUM FINS, ALUMINUM  
END PLATES**

**POLYCARBONATE DRAIN PANS**

**FACTORY INSTALLED PISTON ORIFICE**

**DX COOLING & ELECTRIC HEATING**

**POWDER COATED BEIGE CABINET**

**FULLY INSULATED CABINET**

**208/230 VAC OPERATION**

**TIME DELAY AND CONTROL TRANSFORMER**

**MULTI-SPEED DIRECT DRIVE BLOWER**

**TWIN CIRCUIT BREAKERS IS STANDARD**

**WITH 15 & 20 KW MODELS ONLY**

### OPTIONAL FEATURES:

**SLIDE IN REPLACEMENT DX COILS**

**DIFF. SEER RATINGS OPTIONS A/C & HP**

**3,5,6,8, OR 10 KW**

**OPTIONAL DISCONNECT SWITCH**

**FACTORY OR FIELD INSTALL EXPANSION VLV**

**TOTALLY EMBOSSED GALVANIZED CABINET**

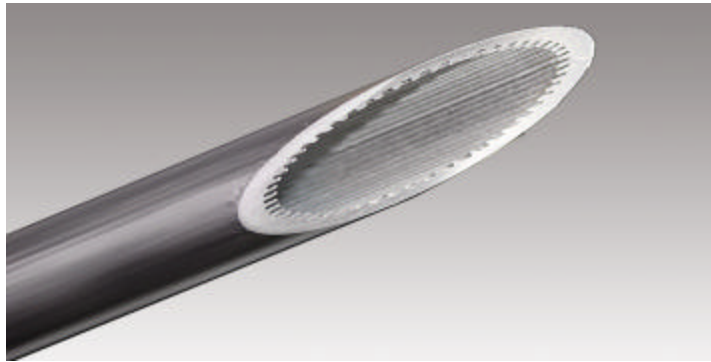
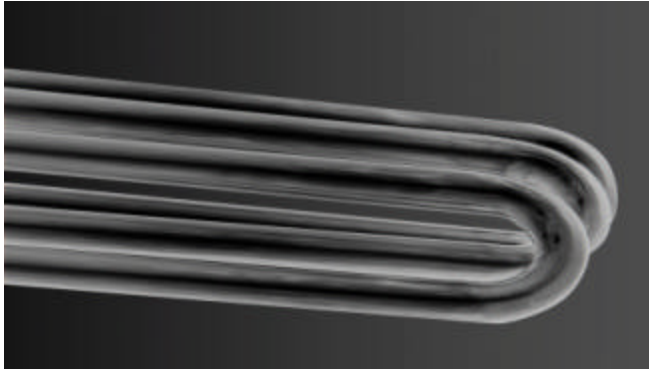


### CABINET DIMENSIONS:

Model:	Cabinet Height	Cabinet Width	Cabinet Depth	Plenum Width	Plenum Depth
SL Models	45.00"	19.75"	21.50"	18.50"	15.00"
BL Models	51.00"	23.00"	22.50"	21.50"	15.75"



**SL / BL MULTI-POS AHU  
A/C OR HP, R22 & R410A  
“AAA” ALL-ALUMINUM COIL**



ELECTRICAL SPECIFICATIONS							
MODEL	KW @ 240 VAC	BTUH	AMPS	MCA Ckt 1	MCA Ckt 2	MOP Ckt 1	MOP Ckt 2
SL18/24/30-0	0	0	1.5	2	0	15	0
SL18/24/30-3	3	10,257	14	18	0	20	0
SL18/24/30-5	4.8	16,411	22	27	0	30	0
SL18/24/30-6	6	20,512	27	34	0	40	0
SL18/24/30-8	8	27,352	35	44	0	50	0
SL18/24/30-10	9.6	32,822	42	52	0	60	0
SL18/24/30-15	14.4	49,234	62	52	25	60	0
SL/BL36-0	0	0	3	4	0	15	0
SL/BL36-3	3	10,257	16	20	0	20	0
SL/BL36-5	4.8	16,411	23	29	0	30	0
SL/BL36-6	6	20,512	28	35	0	40	0
SL/BL36-8	8	27,352	37	46	0	50	0
SL/BL36-10	9.6	23,822	43	54	0	60	0
SL/BL36-15	14.4	49,234	63	54	25	60	30
SL/BL36-20	19.2	65,649	83	54	50	60	50
SL/BL42/48-0	0	0	4	5	0	15	0
SL/BL42/48-3	3	10,257	17	21	0	15	0
SL/BL42/48-5	4.8	16,411	24	30	0	40	0
SL/BL42/48-6	6	20,512	29	37	0	40	0
SL/BL42/48-8	8	27,352	38	47	0	50	0
SL/BL42/48-10	9.6	32,822	44	55	0	60	0
SL/BL42/48-15	14.4	49,234	64	55	25	60	30
BL42/48-20	19.2	65,649	84	55	50	60	50
BL60-0	0	0	5	7	0	15	0
BL60-3	3	10,257	18	22	0	30	0
BL60-5	4.8	16,411	25	32	0	40	0
BL60-6	6	20,512	30	38	0	40	0
BL60-8	8	27,352	39	48	0	50	0
BL60-10	9.6	32,822	45	57	0	60	0
BL60-15	14.4	49,234	65	57	25	60	30
BL60-20	19.2	65,649	85	57	50	60	50

De-rate BTUH capacity by 25% for ratings at 208 VAC.  
Refer to prevailing electrical code for wire and over current sizes.  
15 & 20 KW models are shipped with dual circuit breakers installed.



BLOWER PERFORMANCE					
MODEL	External Static Pressure				
	0.1	0.2	0.3	0.4	0.5
SL18/24	960	935	895	840	780
SL30/36	1450	1410	1370	1290	1200
SL42/48	1700	1640	1560	1500	1400
BL36	1465	1420	1380	1315	1220
BL42/48	1700	1640	1560	1500	1400
BL60	2180	2090	2000	1920	1850

Ratings on based on blower high speed connection