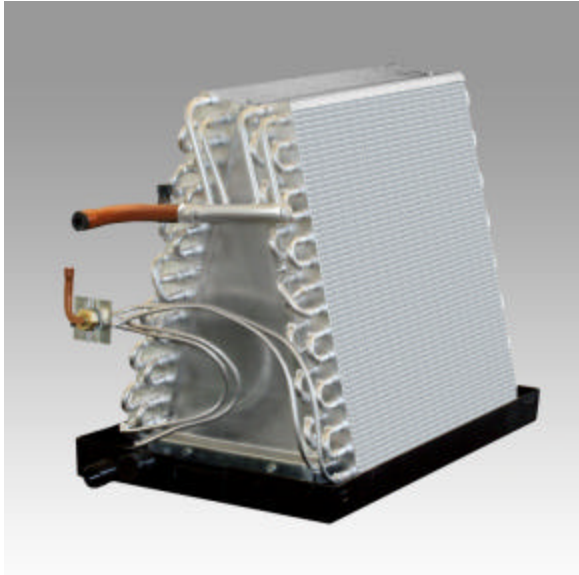




**“AAA” All-Aluminum  
UP-FLOW UNCASED COILS  
ASUC (P)-A & ASUC (P)-M**



## **STANDARD FEATURES**

- GROOVED ALUMINUM ROUND TUBING**
- ENHANCED ALUMINUM FINS**
- HEAVY ALUMINUM END PLATES**
- DUAL RATED FOR R-22 AND R-410a**
- PRESSURE TESTED TO 450 LBS.**
- POLYMER DRAIN PAN**
- PITCHED DRAIN PAN WITH HEAT SHIELD**
- METERING DEVICE IS ACCESSIBLE FROM PLENUM EXTERIOR**



## **OPTIONAL FEATURES**

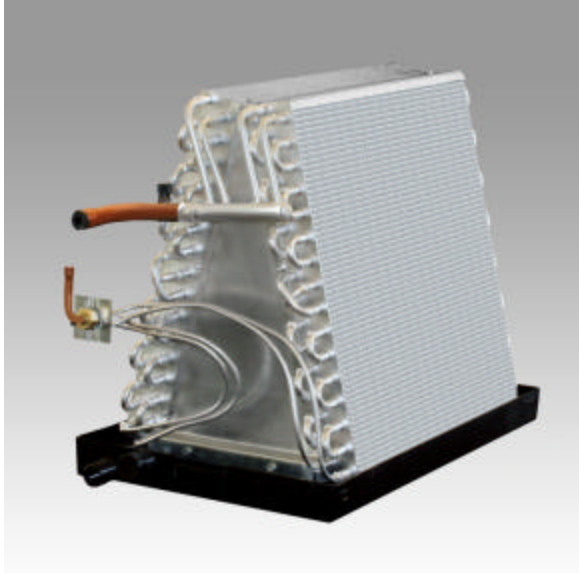
- RIGHT HAND DRAIN CONNECTIONS**
- RIGHT HAND REFRIGERANT CONNECTIONS**
- GALVANIZED STEEL OR NYLON DRAIN PANS**
- A CHOICE OF THERMAL EXPANSION VALVES**
- HEAT PUMP (P) COMPATIBLE**
- 5 DIFFERENT COIL WIDTHS**
- ENHANCED ALUMINUM FINS**
- ANTI-MICROBIAL DRAIN PANS**

**5-YEAR LIMITED WARRANTY AGAINST COIL LEAKAGE  
5-YEAR LIMITED WARRANTY AGAINST DRAIN PAN BREAKAGE  
1-YEAR LIMITED PARTS WARRANTY**





**“AAA” All-Aluminum  
UP-FLOW UNCASED COILS  
ASUC (P)-A & ASUC (P)-M**



Specify coil width needed when ordering.  
Example: ASUC24-A264T+D-5LH

Specify left or right hand  
refrigerant and drain connections.  
Example: ASUC24-A264T+D-5 LH

To specify a heat pump coil, when ordering add “P” (heat pump) in the coil model number.  
Example: ASUC**P**24-A264T+D-5LH

3/4” MPT primary & secondary drain connections

3/8” liquid line connection

Refrigerant suction line connections:  
1.5 to 3.0 ton 3/4”  
3.5 to 5.0 ton 7/8”

<b>UNCASED COIL DIMENSIONS</b>			
<b>Coil Width Code</b>	<b>Uncased Depth</b>	<b>Uncased Width</b>	<b>Uncased Height</b>
5	19.50"	13.00"	****
6	19.50"	15.00"	****
7	19.50"	17.00"	****
8	19.50"	20.00"	****
9	19.50"	24.00"	****

Coil Height will vary depending on the coil used.  
Call AllStyle for specific information about your application.  
Specifications may change without notice.





# AllStyle Coil Company, LP.

7037 Brittmore Houston, TX. 77041  
 Ph: 713-466-6333 Fax: 713-466-6363

## Standard Coil Heights for "AAA" Aluminum Un-Cased Coil Slabs

Coil	Cabinet Height	Coil	Cabinet Height	Coil	Cabinet Height
ASUCXX-A160G	17-1/2"	ASUCXX-A342G	15-1/2"	ASUCXX-M120G	13-1/2"
ASUCXX-A180G	19-1/2"	ASUCXX-A343G	15-1/2"	ASUCXX-M140G	15-1/2"
ASUCXX-A212G	11-1/2"	ASUCXX-A344G	15-1/2"	ASUCXX-M160G	17-1/2"
ASUCXX-A214G	11-1/2"	ASUCXX-A362G	17-1/2"	ASUCXX-M180G	19-1/2"
ASUCXX-A222G	13-1/2"	ASUCXX-A363G	17-1/2"	ASUCXX-M212G	12-1/2"
ASUCXX-A224G	13-1/2"	ASUCXX-A364G	17-1/2"	ASUCXX-M214G	12-1/2"
ASUCXX-A226G	13-1/2"	ASUCXX-A380G	19-1/2"	ASUCXX-M224G	13-1/2"
ASUCXX-A242G	15-1/2"	ASUCXX-A382G	19-1/2"	ASUCXX-M226G	13-1/2"
ASUCXX-A244G	15-1/2"	ASUCXX-A383G	19-1/2"	ASUCXX-M242G	15-1/2"
ASUCXX-A246G	15-1/2"	ASUCXX-A384G	19-1/2"	ASUCXX-M244G	15-1/2"
ASUCXX-A262G	17-1/2"	ASUCXX-A301G	21-1/2"	ASUCXX-M246G	15-1/2"
ASUCXX-A264G	17-1/2"	ASUCXX-A302G	21-1/2"	ASUCXX-M262G	17-1/2"
ASUCXX-A266G	17-1/2"	ASUCXX-A303G	21-1/2"	ASUCXX-M264G	17-1/2"
ASUCXX-A282G	19-1/2"	ASUCXX-A304G	21-1/2"	ASUCXX-M266G	17-1/2"
ASUCXX-A284G	19-1/2"	ASUCXX-A3Y2G	23-1/2"	ASUCXX-M282G	19-1/2"
ASUCXX-A286G	19-1/2"	ASUCXX-A3Y3G	23-1/2"	ASUCXX-M284G	19-1/2"
ASUCXX-A202G	21-1/2"	ASUCXX-A3Y4G	23-1/2"	ASUCXX-M286G	19-1/2"
ASUCXX-A204G	21-1/2"	ASUCXX-A3Z2G	25-1/2"	ASUCXX-M202G	21-1/2"
ASUCXX-A206G	21-1/2"	ASUCXX-A3Z3G	25-1/2"	ASUCXX-M204G	21-1/2"
ASUCXX-A2Y2G	23-1/2"	ASUCXX-A3Z4G	25-1/2"	ASUCXX-M206G	21-1/2"
ASUCXX-A2Y4G	23-1/2"	ASUCXX-A400G	21-1/2"	ASUCXX-M2Y2G	23-1/2"
ASUCXX-A2Y6G	23-1/2"	ASUCXX-A401G	21-1/2"	ASUCXX-M2Y4G	23-1/2"
ASUCXX-A2Z2G	25-1/2"	ASUCXX-A4Y0G	23-1/2"	ASUCXX-M2Y6G	23-1/2"
ASUCXX-A2Z4G	25-1/2"	ASUCXX-A4Y1G	23-1/2"	ASUCXX-M2Z2G	25-1/2"
ASUCXX-A2Z6G	25-1/2"	ASUCXX-A4Z0G	25-1/2"	ASUCXX-M2Z4G	25-1/2"
		ASUCXX-A4Z1G	25-1/2"	ASUCXX-M2Z6G	25-1/2"